

Experience the Future of Brain Wellness,
Seamlessly Delivered.



Cosmos Healthcare®: Pioneering personalised
mental and neurological care.



Intelligent. Integrated. Individualised.

Experience the Future of Brain Wellness,
Seamlessly Delivered.

Welcome to Cosmos Healthcare®

At Cosmos Healthcare®, we are at the forefront of personalised mental and neurological care. Our mission is clear: to empower minds and transform lives across the globe. We achieve this by uniquely fusing advanced neuroscience, state-of-the-art AI technologies, and deeply personalised care into a cohesive, transformative therapeutic model.

The Cosmos Distinction: A Seamless Ecosystem for Optimal Outcomes

Navigating brain health can be complex. We've simplified it. Cosmos Healthcare® isn't just a clinic; it's a fully integrated digital health ecosystem. We've meticulously developed a suite of proprietary, interconnected platforms, ensuring every interaction with us – whether as a patient or a clinical partner – is intuitive, efficient, and effective.

From your initial consultation to ongoing treatment and support, our system is designed for seamless online operation, accessible via web, tablet, or mobile. This interconnected approach allows for unparalleled personalisation of care, streamlined communication, and a truly collaborative journey towards better brain health.

Pioneering Care, Powered by Integrated Technology

Imagine a system where every piece of data, every assessment, and every treatment is harmonised. This is the reality at Cosmos Healthcare®. Our innovative tools work in concert, providing our expert clinicians and valued patients with a clear, comprehensive, and continuously updated view of their unique neurological landscape and therapeutic progress.

Cosmos Healthcare®: Pioneering personalised
mental and neurological care.



Our Integrated Platforms: Intelligent Healthcare, Seamlessly Delivered.

At Cosmos Healthcare®, our strength lies in a sophisticated, interconnected digital infrastructure. Operating 24/7, these proprietary platforms work in unison, delivering advanced, personalised solutions in neurological and mental wellness.

Our Exclusive Digital Health Suite:

- **The Cosmos Platform:** Your comprehensive digital hub for seamless care. This includes patient registration, consent forms, symptom reporting, appointment scheduling, secure payments, and direct patient communication – all managed efficiently online.
- **Neuromap®:** Advanced AI-driven qEEG analysis, transforming brainwave data into a precise blueprint for personalised neuromodulation strategies.
- **QPAN®** (qEEG-Guided Personalized AI-Based Neuromodulation): Our revolutionary treatment model, integrating Neuromap® insights with targeted rTMS or tDCS for effective, bespoke interventions.
- **EdfCheck™:** Guarantees data integrity for Neuromap® by performing real-time quality analysis of EEG (EDF) files, saving valuable clinical time and ensuring scan accuracy.
- **BrainPanel™:** Your dedicated patient portal for secure access to treatment information, progress reports, and 24/7 AI-powered support, empowering you with knowledge.
- **CortexPlan™:** A precision-focused platform for clinicians to design, manage, and share detailed neuromodulation protocols (TMS/rTMS), ensuring meticulous and transparent treatment.

The Benefits of Our Integrated System:

- **Deep Personalisation:** Dynamically adapted care tailored to your unique neurological profile.
- **Seamless Collaboration:** An intuitive experience for patients and efficient processes for health partners.
- **Enhanced Efficiency & Accuracy:** Streamlined operations and data integrity for optimal outcomes.
- **Empowered Patients:** Full transparency and access to information, putting you in control.
- **Future-Forward Solutions:** A new standard in integrated, technology-driven brain care.

Partner with the Pioneers.

Join Cosmos Healthcare® and experience a new paradigm in neurological and mental wellness – where cutting-edge technology and compassionate, individualised care converge seamlessly.

**COSMOS
HEALTHCARE®**

33 LONDON ROAD, COSMOS HEALTHCARE
REDWOOD HOUSE, ENFIELD, EN2 6DR

+44 208 144 9884

 www.cosmoshealth.co.uk

 info@cosmoshealth.co.uk

COSMOS HEALTHCARE®

PIONEERS IN PERSONALISED NEUROLOGICAL AND MENTAL CARE

Empowering Minds, Transforming Lives

Cosmos Healthcare® specialises in innovative, personalised treatments for a wide range of neurological and psychological conditions, promoting optimal mental health and cognitive well-being globally.

Comprehensive Services

- Neurodevelopmental: Autism (ASD), ADHD, Learning Difficulties
- Neurological: Epilepsy, Stroke Recovery, Alzheimer's, Dementia, Parkinson's
- Mental Health: Anxiety, Depression, OCD, PTSD
- Addictions: Substance Abuse, Alcohol, Smoking Cessation

Innovative Treatments

- **Quantitative EEG (qEEG):** Detailed brain mapping guiding accurate diagnosis and tailored treatments.
- **Transcranial Magnetic Stimulation (TMS):** Non-invasive FDA-approved therapy for depression, OCD, PTSD, and more.
- **Transcranial Direct Current Stimulation (tDCS):** Enhances neuroplasticity, cognition, mood, and learning.
- **Transcranial Pulse Stimulation (TPS):** Emerging treatment showing promise for Alzheimer's and cognitive decline.
- **Bioresonance Therapy:** Frequency-based therapy aiding addiction recovery and stress relief.
- **Electrical Muscle Stimulation (EMS):** Supports muscle recovery, spasticity reduction, and rehabilitation.
- **Functional Electrical Stimulation (FES):** Restores functional motor skills, crucial for stroke and neurological recovery.

Personalised Approach

Each treatment plan is uniquely tailored, integrating detailed neurological and psychological assessments, including qEEG analysis, to ensure precise, effective interventions.

Global Reach, Local Care

From our London headquarters, Cosmos Healthcare® offers accessible in-clinic and remote care worldwide using certified medical devices for comfortable, effective home treatment.

DR ALPTEKIN AYDIN

FOUNDER & CLINICAL DIRECTOR

Dr Alptekin Aydin is a leading Specialist Neuropsychologist **with over 25 years in clinical practice and neuroscience innovation.** Internationally renowned, he integrates advanced neuroscience, AI technology, and personalised care.

Credentials:

- Ph.D., Clinical Psychology & Neuroscience (USA)
- MSc, King's College London, Institute of Psychiatry (UK)
- Certified TMS/tDCS Practitioner (Maastricht University, Netherlands)
- Expert Witness in Civil Law (UK, Cardiff University)

Professional Affiliations:

- British Psychological Society (BPS)
- British Neuroscience Association (BNA)
- British Association for Psychopharmacology (BAP)
- International Society of Substance Use Professionals (ISSUP)



QPAN® (qEEG-Guided Personalized AI-Based Neuromodulation) is Dr Aydin's groundbreaking method integrating:

Neuromap® Algorithm: AI-driven analysis for accurate brain mapping.

Personalised Neuromodulation: Customised TMS and tDCS interventions based on detailed qEEG assessments.

Proven effectiveness in improving cognition, emotional regulation, behaviour, and speech across multiple conditions.

Success Stories & Research

Since 2017, Cosmos Healthcare® has supported over 10,000 individuals globally, providing:

Improved attention, mood, and cognition
Enhanced speech and social interactions
Successful addiction recovery outcomes

Our published peer-reviewed research (*Frontiers in Psychiatry*, PubMed ID: 40138870) validates the QPAN® model, demonstrating significant improvements for children with autism using qEEG-guided neuromodulation. At Cosmos Healthcare, advanced science meets compassionate care, delivering sustainable, transformative results.



COSMOS HEALTHCARE[®]

PARTNERSHIP WITH UK VITAL CLINIC

An Integrative Approach to Mental, Neurological, and Physical Wellbeing

In partnership with UK Vital Clinic, Cosmos Healthcare[®] introduces Holistic Wellness Programs—personalized, research-informed therapies that unite neuroscience, nutrition, and gut-brain health. This innovative service addresses the root causes of imbalance in neurodivergent and psychologically sensitive populations, including those with autism, **ADHD, anxiety, and chronic digestive conditions.**

Our programs reflect growing scientific consensus: Factors like diet, amino acid balance, and gut integrity profoundly influence emotional regulation, cognition, behavior, and immunity.

Comprehensive Evaluation & Functional Brain-Nutrition Mapping

Every individual's journey begins with a multi-dimensional assessment, including:

- **Blood Biomarker Analysis:** Evaluates vitamin and mineral levels, inflammation, metabolic and hormonal markers.
- **Diet & Lifestyle Review:** Analyzes patterns in food intake, activity, and environmental influences.
- **Symptom and Behavior Profiling:** Tracks cognitive, emotional, gastrointestinal, and sensory responses.



Tailored Supplementation Protocols

Every individual's journey begins with a Based on the combined data from blood testing, dietary analysis, and brain mapping:

- Personalized supplementation plans are designed with vitamins, minerals, co-factors, and amino acids in specific ratios.
- Formulations are typically delivered in liquid or liposomal forms to improve absorption—particularly critical for individuals with gut permeability issues or sensory sensitivities.
- Each protocol supports both metabolic optimization and neurological performance.

Neuromap[®], our proprietary AI-driven qEEG brain mapping technology, further enhances these findings. It identifies underactive or overactive brain regions and links them to potential **nutritional deficits—such as B vitamin needs in attention networks or magnesium insufficiency in emotional regulation circuits.**

AMINO ACID THERAPY: REBALANCING BRAIN CHEMISTRY

Neurodivergent individuals often show signs of neurotransmitter imbalances—particularly in dopamine, serotonin, and GABA. These are key regulators of mood, motivation, focus, and sleep.



Our programs offer amino acid-based supplementation (e.g., L-tyrosine, L-tryptophan, DLPA) to support:

- Emotional stability
- Cognitive clarity
- Better impulse control
- Improved sleep cycles

All dosages are precisely calibrated according to lab biomarkers and Neuromap[®] findings to avoid overstimulation or imbalance.

COSMOS HEALTHCARE[®]

PARTNERSHIP WITH UK VITAL CLINIC

PARTNERSHIP WITH UK VITAL CLINIC

Gut-Brain Axis Modulation: Repairing From Within

Mental wellness begins in the gut. Disruptions in microbiota, leaky gut syndrome, and food sensitivities can directly affect brain function and inflammation.

Neuromap[®] reveals neural patterns that correspond with gut dysfunction, such as:

- High right parietal delta waves, often linked with malabsorption
- Frontal-limbic dysregulation, suggestive of gluten/casein sensitivity

Our targeted gut interventions include:

- Probiotics and prebiotics to restore microbial health
- Zinc, L-glutamine, and omega-3s to repair gut lining
- Dietary adjustments to remove allergens and inflammatory foods

This holistic approach improves not just digestion—but cognition, mood, and resilience.

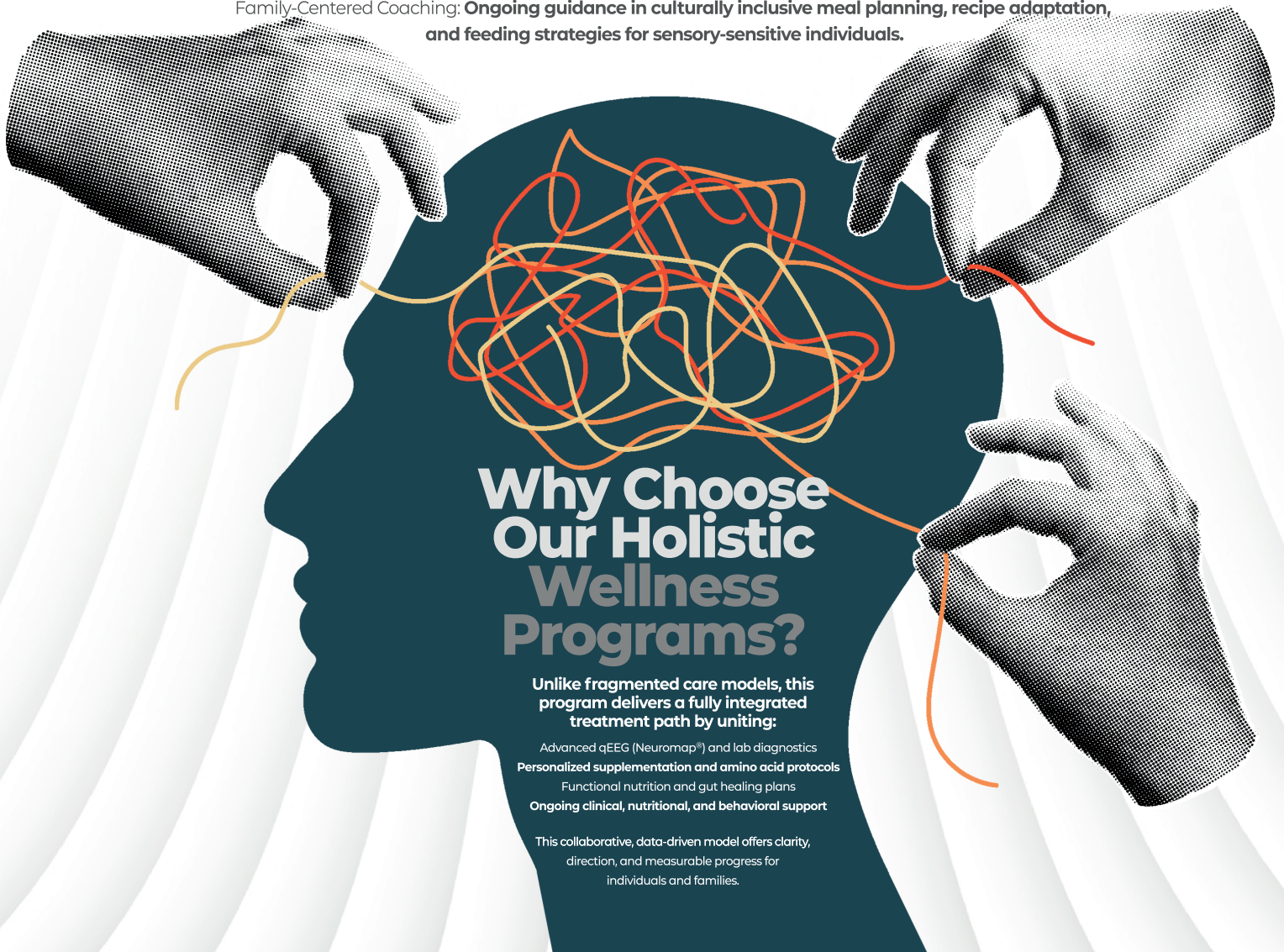
Dietary Interventions: Food as Medicine

Our Holistic Wellness Programs emphasize nutritional empowerment through:

Elimination Diets: Guided removal of trigger foods (e.g., gluten, dairy, soy) based on test results and symptoms.

Nutrient-Dense Meal Planning: Meals rich in omega-3s, antioxidants, fiber, and essential fats that optimize brain and gut function.

Family-Centered Coaching: **Ongoing guidance in culturally inclusive meal planning, recipe adaptation, and feeding strategies for sensory-sensitive individuals.**



Why Choose Our Holistic Wellness Programs?

Unlike fragmented care models, this program delivers a fully integrated treatment path by uniting:

- Advanced qEEG (Neuromap[®]) and lab diagnostics
- Personalized supplementation and amino acid protocols
- Functional nutrition and gut healing plans
- Ongoing clinical, nutritional, and behavioral support

This collaborative, data-driven model offers clarity, direction, and measurable progress for individuals and families.

Neuromap[®]

CONNECTIVITY & COMMUNICATION ANALYSIS

Neuromap[®] visualizes how brain regions communicate or misfire by measuring:

Coherece: Synchronization of neural regions

Asymmetry: Balance between brain hemispheres

Phase Lag: Timing delays affecting language, motor skills, and emotion

These insights link directly to behaviors—informing effective intervention strategies.

Flow Analysis: Identifying Dysfunction Pathways

Neuromap[®] reveals how abnormal brain signals spread, enabling precise treatment:

- Emotional dysregulation traced from limbic activation disrupting frontal control.
- Motor tics tracked through disrupted motor-thalamo-cortical loops.

Clinicians use these insights to interrupt dysfunctional patterns with targeted therapies.

Predictive Biomarkers

Neuromap[®] identifies specific neurological markers for accurate diagnosis and treatment predictions:

- ADHD: Excess frontal theta
- Autism: Cortical disconnection
- Speech Delay: Temporal hypoactivity
- Epilepsy: Parietal hyper-coherence


Treatment effectiveness improves through evidence-based biomarker targeting.

Personalized Reports & Treatment Plans

Neuromap[®] delivers clear, comprehensive reports including:

- Spectral frequency analysis
- Brain activation & connectivity maps
- Biomarker likelihood scores
- Targeted recommendations (neuromodulation, cognitive therapy, lifestyle changes)

Neuromap[®] transforms diagnosis into actionable solutions, providing clarity and direction.



Neuromap
Because
Every Brain
Deserves
Clarity.

Neuromap[®]

ADVANCED AI-GUIDED BRAIN MAPPING

Revealing the Brain's Hidden Patterns

What is Neuromap[®]?

Neuromap[®] is an innovative platform using qEEG and AI algorithms to precisely map individual brain activity. Unlike traditional methods, Neuromap[®] objectively measures brain functions, pinpointing neurological strengths and dysfunctions.

Why Choose Neuromap[®]?

- Analyzes real-time brain activity, not just static structures.
- Detects specific biomarkers linked to symptoms (autism, ADHD, anxiety, epilepsy, learning difficulties).
- Compares brain patterns to extensive neurotypical and neurodivergent datasets.
- Generates tailored, actionable treatment strategies.



AI-Powered Spectral Analysis

Neuromap[®] decodes EEG data across five critical frequency bands:

- Delta (0–4 Hz): Sleep, withdrawal states
- Theta (4–7 Hz): Attention deficits, daydreaming
- Alpha (8–12 Hz): Focus, learning readiness
- Beta (12–30 Hz): Anxiety, cognitive processing speed
- Gamma (30–100 Hz): Information integration

Precision Epilepsy Detection

Neuromap[®] precisely identifies epilepsy markers in real time, including:

- Spike-and-wave complexes (e.g., 3 Hz discharges)
- Sharp waves, polyspikes, focal epileptiform activity
- Seizure origin zones, propagation paths, thalamo-cortical disruption.

This precision aids early diagnosis, accurate treatment, and effective monitoring.

Neuromap[®]

MAPPING POTENTIAL, NOT LABELS

Neuromap[®] identifies not just areas needing support but highlights hidden strengths and developmental opportunities through detailed spectral analysis:

Underactive regions (attention regulation deficits)

Overactive regions (social and language delays)

Connectivity and communication patterns (asymmetry, coherence)

This data predicts individual responses to neuromodulation or therapies, guiding effective intervention and life planning.

PRECISION ELIMINATES ERROR

Neuromap[®] consistently delivers accurate, reproducible results:

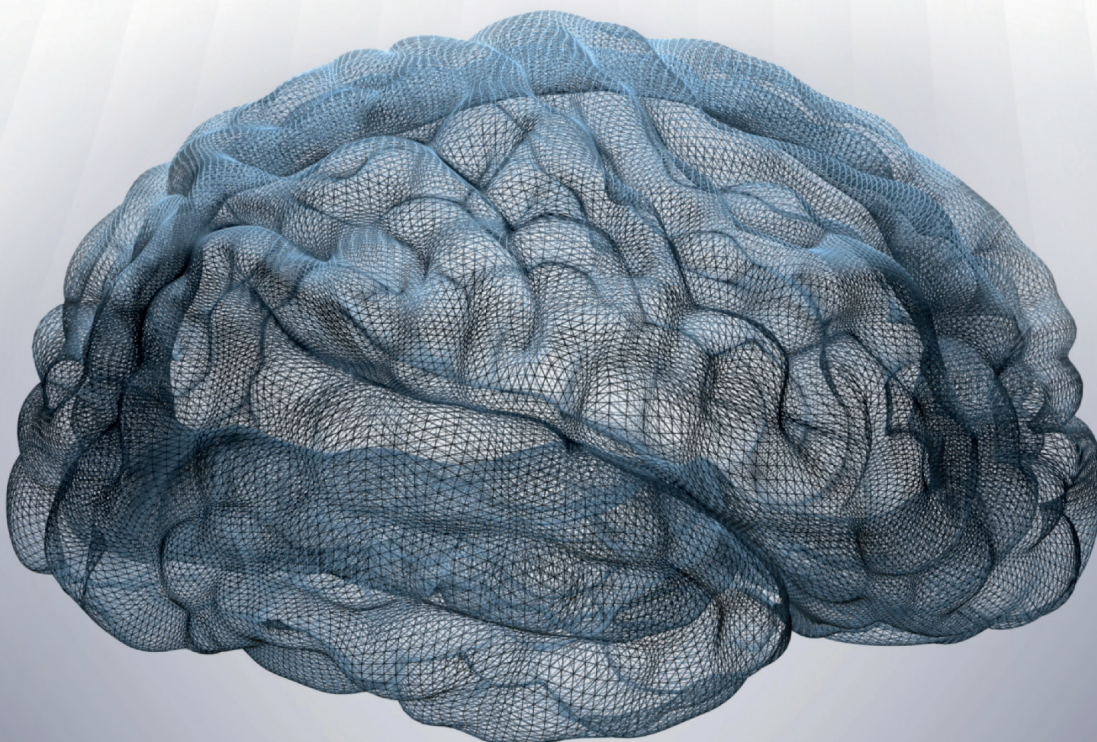
- No subjective bias or interpretation errors
- No overlooked neurological anomalies
- Uniform, reliable analysis every time

EARLY ANALYSIS, LIFELONG BENEFITS

Early qEEG assessment (ages 3–8) can transform a child's future:

- Promptly identifies neurological factors behind delays and challenges
 - Provides clear, tailored strategies aligned with brain function
- Offers family-centered intervention plans, ongoing tracking, and measurable improvements

Neuromap[®] clarifies previously unexplained learning, speech, emotional, and behavioral struggles, enabling proactive, effective intervention.



**The
Brain is
Ready.
Are
We?**

qEEG technology is proven and established, yet Neuromap[®]'s AI-driven enhancement represents a leap forward—offering unprecedented clarity and precision.

Let's replace uncertainty with **understanding**, ensuring every child's neurological blueprint guides their best possible future.

QPAN[®] & Neuromap[®]:
Clearly Seeing the Future.

QEEG[®]

TRANSFORMING BRAIN Science

A Brief History of qEEG

Quantitative Electroencephalography (qEEG) evolved from traditional EEG in the 1970s, *providing objective, numerical analysis of brainwave patterns*. Unlike structural imaging (MRI, CT), qEEG captures dynamic, real-time brain activity across various frequencies—offering direct insight into cognitive and emotional processes.

FDA-approved and endorsed by the AAN and APA, qEEG is essential for assessing conditions like ADHD, epilepsy, anxiety, and learning disorders.

2025: AI Meets Human Insight

Historically, qEEG depended on human interpretation, which is subjective and variable. Now, Neuromap[®] uses advanced AI to offer consistent, precise, and bias-free analysis.

AI rapidly interprets thousands of brainwave patterns, referencing a unique database of over 7,000 outcome-linked neurodivergent cases, not just neurotypical norms.

Real-Life Benchmarking

Since 2017, our database includes extensive qEEG data from diverse neurological profiles (ASD, ADHD, epilepsy, anxiety, developmental delays), tracking clinical outcomes, behavioral data, and treatment histories.

Neuromap[®] thus provides meaningful predictions based on real-world results, not averages alone.

BRAIN-BEHAVIOR INTEGRATION

Neuromap[®] interprets both psychological and neurological biomarkers, identifying patterns like:

- Emotional dysregulation (limbic hyperactivity)
- **Executive dysfunction (prefrontal incoherence)**
- Social withdrawal (right-hemisphere dominance)
- Learning delays (occipital theta spikes)
- **Language delays (temporal hypoactivity)**
- Epilepsy risk (spike-wave complexes, seizure zones)

Neuromap[®] transforms this complex data into actionable insights and tailored treatment strategies.



WHY TRADITIONAL SYSTEMS FALL SHORT

Conventional therapies (e.g., ABA, pharmacotherapy) often rely on behavioural compliance rather than addressing underlying neurological imbalances, **resulting in temporary improvements at best.**

GLOBAL COSTS VS. OUTCOMES

Current spending on conditions like Autism and ADHD is high:

- UK: ~£ 21,000 per child annually. ▪ US: ~\$ 20,000+ per child annually. ▪ EU: € 14,483 per child annually.
- **GCC Countries:** Privately funded, averaging ~\$ 68,000 annually per child.

***Yet outcomes often remain inadequate, straining healthcare and educational systems.**

QPAN[®]: EFFECTIVE, SCALABLE, SUSTAINABLE

QPAN[®] reduces overall costs and enhances outcomes by:

- Providing early, measurable improvement.
- Supporting complex cases with individualised plans.
- Utilising remote digital platforms for global scalability.
- Achieving sustainable gains in independence, education, and social integration.

Join the Transformation

QPAN[®] is transforming the landscape of neurodevelopmental care—making personalised, **data-driven, holistic support accessible worldwide.**



QPAN[®]

Care PERSONALISED NEURO
DEVELOPMENTAL

Why Choose QPAN[®]?

- **Personalised Care:** Uses Neuromap[®] to identify exact brain regions needing support, creating tailored interventions.
- **Holistic Approach:** Integrates neuromodulation with nutrition, occupational therapy, speech therapy, and educational support.
- **Safe & Effective:** Employs FDA-approved rTMS and CE-certified tDCS, promoting cognitive and behavioural improvements with minimal side effects.
- **Proven Results:** 70–85% of patients experience improved speech, cognition, social skills, and behaviour.

QPAN[®] (qEEG-guided Personalized AI-based Neuromodulation) uniquely combines advanced brain mapping, artificial intelligence, and targeted neuromodulation (**rTMS/tDCS**) to treat neurodivergent conditions. Developed by Dr Alptekin Aydin, QPAN[®] has supported over 6,000 children worldwide.

WHAT IS QPAN[®]?

Neuromodulation: A Paradigm Shift

Neuromodulation gently corrects brainwave imbalances, fostering neuroplasticity and addressing root neurological issues, unlike traditional symptom-focused therapies.

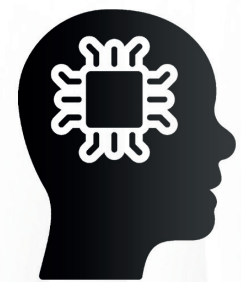
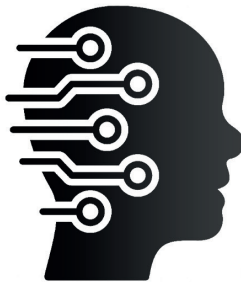
QPAN[®] REMOTE TDCS THERAPY BY

COSMOS HEALTHCARE[®]

PERSONALISED BRAIN CARE DELIVERED GLOBALLY

THE REMOTE TDCS ADVANTAGE

- **Convenient:** Receive expert care from home.
- **Evidence-Based:** Supported by global research and clinical validation.
- **Cost-Effective:** Eliminates travel and reduces healthcare costs.
- **Easy & Safe:** CE-certified, wireless technology designed specifically for home use.
- **Clinically Supported:** Real-time professional oversight and guidance remotely.



CLINICIAN & CLINIC INTEGRATION

Cosmos Healthcare[®] provides clinicians and rehab centers with:

- Real-time patient progress tracking
- Automatic alerts for compliance issues
- Integrated Neuromap[®] analytics for precision care
- Easy-to-use digital management portals

GLOBALLY ACCESSIBLE EU-CERTIFIED

Our CE-certified devices are shipped pre-configured globally, ensuring easy setup and consistent, high-quality neuromodulation—even in remote areas.

CLINICALLY PROVEN RESULTS

- Documented efficacy in peer-reviewed studies
- Consistent improvements reported in speech, attention, and behaviour
- Hundreds of international family success stories

BENEFITS FOR PUBLIC HEALTH

QPAN[®] remote tDCS is ideal for national-scale mental and neurological health programs:

- Reduces healthcare costs and medication dependency
- Supports decentralised care and remote monitoring
- Provides data-driven insights for better public health policy

**Personalised
Brain Health.
Anywhere.
Anytime.**

QPAN[®] Remote tDCS from
Cosmos Healthcare[®].

QPAN[®] REMOTE TDCS THERAPY BY

COSMOS HEALTHCARE[®]

PERSONALISED BRAIN CARE, DELIVERED GLOBALLY

WHAT IS TDCS?

Transcranial Direct Current Stimulation (tDCS) is a safe, non-invasive neuromodulation method delivering gentle electrical currents through scalp electrodes to enhance:



- Cognitive skills
- Emotional balance



- Attention & learning
- Motor function & rehabilitation

WHY CHOOSE QPAN[®] -GUIDED TDCS?

Cosmos Healthcare[®] uses QPAN[®]—an advanced integration of AI and precise QEEG brain mapping (Neuromap[®])—to customise each session:



- Personalised stimulation targets
- Optimised intensity & duration



- Tailored frequency & electrode placement

With QPAN[®], therapy matches your unique neurological profile, ensuring maximum effectiveness and safety.

GLOBAL IMPACT: 3,000+ FAMILIES SERVED

Families worldwide benefit from our remote therapy, bringing expert neuromodulation into their homes without travel or clinic visits.

Convenient, personalised care is available daily.

Conditions Treated

- ▶ Autism Spectrum Disorder (ASD)
- ▶ **ADHD**
- ▶ Learning Difficulties
- ▶ **Anxiety & Depression**
- ▶ Language Delays
- ▶ **Epilepsy (focal types)**
- ▶ Stroke Rehabilitation
- ▶ Sleep Issues



COSMOS HEALTHCARE[®]

PERSONALIZED RTMS THERAPY

Advanced Neurological & Mental Wellness
Brain-Based Care with Science and Compassion

WHAT IS RTMS?

Repetitive Transcranial Magnetic Stimulation (rTMS) is a non-invasive therapy using magnetic pulses to activate brain regions linked to mood, cognition, and movement. Scientifically validated globally since the 1980s.

GLOBAL RECOGNITION OF RTMS:

- USA – FDA-approved for depression, OCD, explored for PTSD, anxiety, and chronic pain.
- UK – NICE-approved for major depression.
- Germany – Recommended for depression, schizophrenia, chronic pain.
- EU – CE-approved for depression, anxiety, OCD, pain, and stroke recovery.



COSMOS HEALTHCARE[®]

PERSONALIZED RTMS THERAPY

Advanced Neurological & Mental Wellness
Brain-Based Care with Science and Compassion

CONDITIONS WE TREAT WITH RTMS AT COSMOS HEALTHCARE[®]

- ▶ **Depression & Anxiety** – Neuromap[®] pinpoints areas of reduced neural activity to customize mood-enhancing protocols.
- ▶ **OCD & PTSD** – Targets hyperactive regions identified through QEEG, reducing obsessive or traumatic responses.
- ▶ **Autism Spectrum Disorder (ASD)** – Protocols derived from Neuromap[®] data to enhance social and cognitive functioning.
- ▶ **ADHD** – Neuromap[®] identifies attentional deficits, guiding precise stimulation to improve focus and impulse control.
- ▶ **Stroke Rehabilitation** – Uses Neuromap[®] to target peri-lesional and contralesional brain areas, boosting functional recovery.
- ▶ **Epilepsy (Focal)** – Neuromap[®] detects epileptic foci for targeted low-frequency inhibition, reducing seizure frequency.
- ▶ **Cerebral Palsy (CP)** – Neuromap[®] highlights motor cortex regions needing stimulation to reduce spasticity and improve movement.
- ▶ **Chronic Pain & Fatigue Disorders** – Tailored stimulation of brain areas identified via Neuromap[®] to alleviate persistent pain and fatigue symptoms.

Since 2017, Cosmos Healthcare[®] has successfully supported:

- Over 5,000 Adults
- Over 7,000 Children & Adolescents

Using AI-guided, QEEG-personalized rTMS based on our globally recognized QPAN[®] Protocol.



COSMOS HEALTHCARE[®]

& UK VITAL | Advanced Liposomal Supplements for Optimal Health

Repetitive Transcranial Magnetic Stimulation (rTMS) is a non-invasive therapy using magnetic pulses to activate brain regions linked to mood, cognition, and movement. Scientifically validated globally since the 1980s.

WHY LIPOSOMAL SUPPLEMENTS?

Traditional vitamins often degrade during digestion, limiting effectiveness. Liposomal technology encapsulates nutrients in protective phospholipid layers, greatly improving absorption, bioavailability, and therapeutic impact.

KEY ADVANTAGES:

- Superior nutrient absorption
- Increased effectiveness and faster results
- Easy-to-administer liquid forms, ideal for children and adults with swallowing difficulties



TARGETED SOLUTIONS FOR UNIQUE NEEDS

Our carefully formulated **supplements specifically** support:

NeuroLipo[®]

Cognitive function, emotional balance, immune support for **children's neurological health**.



CalmLipo[®]

Cognitive function, emotional Mental clarity, calmness, stress reduction, enhanced focus, **ideal for anxiety, ADHD, and emotional stability.**



Omegalipo[®]

Cognitive function, emotional Comprehensive physical and psychological wellness, including **improved sleep, immune system, bone health, and emotional balance.**



COSMOS HEALTHCARE[®]

& UK VITAL | Advanced Liposomal Supplements for Optimal Health

Repetitive Transcranial Magnetic Stimulation (rTMS) is a non-invasive therapy using magnetic pulses to activate brain regions linked to mood, cognition, and movement. Scientifically validated globally since the 1980s.

OUR SPECIALIZED LIPOSOMAL FORMULATIONS



CalmLipo[®] (Mental Calmness and Focus)

- L-Theanine: Relaxation without drowsiness
- GABA: Reduces anxiety, enhances calmness
- Phosphatidylserine: Cognitive support, stress reduction
- Magnesium: Calming, supports nervous system
- Vitamin B Complex: Energy, mood regulation

Ideal for: Anxiety, panic attacks, ADHD, stress, emotional regulation.



NeuroLipo[®] (Children's Cognitive and Emotional Support)

- **Omega-3 (EPA & DHA):** Brain function & development
- **B Vitamins (B1-B12):** Energy metabolism, nervous system
- **Vitamin C & E:** Antioxidant protection
- **Magnesium & Zinc:** Cognitive function, immunity
- **Ginkgo Biloba & CoQ10:** Enhanced blood flow, cellular energy

Ideal for: Autism, ADHD, learning delays, anxiety, immune deficiencies.



OmegaLipo[®] (Physical & Psychological Wellness)

- Omega-3 (EPA & DHA): Psychological health, cognitive support
- Vitamin D3: Immune support, bone health
- Magnesium: Relaxation, sleep enhancement
- Valerian Root Extract: Improves sleep quality, relaxation
- Vitamin B Complex: Nervous system, energy production

Ideal for: Sleep issues, immune strengthening, bone health, emotional and cognitive support.

QUALITY ASSURANCE FOR ALL PRODUCTS

Our liposomal supplements are:

- Lactose-Free
- Soy-Free
- Nut-Free
- GMO-Free
- Sugar-Free
- Gluten-Free

Available in delicious, child - and adult-friendly flavors.

PIONEERING CARE POWERED BY INTEGRATED *Technology*



Partner with the Pioneers.

Join Cosmos Healthcare® and experience a new paradigm in neurological and mental wellness – where cutting-edge technology and compassionate, individualised care converge seamlessly.

**COSMOS
HEALTHCARE®**

33 LONDON ROAD, COSMOS HEALTHCARE
REDWOOD HOUSE, ENFIELD, EN2 6DR

+44 208 144 9884

www.cosmoshealth.co.uk

info@cosmoshealth.co.uk